

HEADS UP

School's out and your next hire might very well be a student. According to a recent study, new workers are up to four times as likely to be injured on the job in the first month than any other time. To prevent any accidents make sure that required training has been provided and that all students, youths (anyone under 25) or new hires are performing tasks safely.



MOL BLITZES

- June: Mobile equipment for surface and underground mines
- June-July: Heavy and light equipment – Construction Sector
- September-October: Musculoskeletal disorders (MSDs) – All Sectors
- September-October: Fall hazards – Construction Sector



LEADER THINKS PINK

In March of this year insulation manufacturer, Owens Corning of Scarborough, ON, undertook a complete refurbishing of their T1 line. Averaging six days a week, two shifts a day for eight weeks, the peak periods saw upwards of 125 trades personnel including millwrights, iron workers, electricians and pipe fitters working on site. Hired by project contractors PMI, Leader Industries was brought in to provide health and safety expertise.

Directly responsible for over 50 workers, Leader Industries provided orientation to all new PMI hires and reviewed health and safety policies and procedures with jobsite personnel. Leader identified and reviewed potential hazards, ensured that everyone had and used their Personal Protective Equipment (PPE) correctly, handled all administration and provided day-to-day records to MOL. Not only did the project go off without a hitch, there were no incidences requiring First Aid and there was zero lost time due to injury.

When asked about the key to success for this project, Leader Industries' Field Safety Rep, Kim Broda, answered, "Visibility and communication is key. The workers need to know that we take their safety very seriously and when we do our job, they can safely do theirs."

Pleased with the success of the project and our overall performance, Leader Industries has already been approached to do more projects with PMI in the future.

"Workers need to know that we take their safety very seriously and when we do our job, they can safely do theirs."



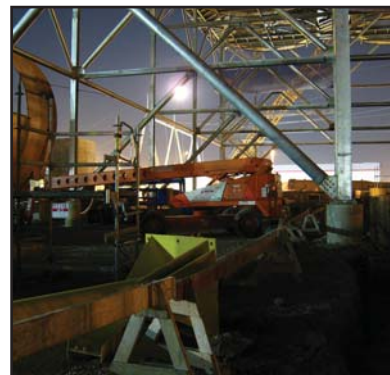
RISK IN YOUR WORKPLACE

On June 15, 2010, Bill 168 amending the OHSA with respect to violence and harassment in the workplace comes into effect. Employers are required to conduct a risk assessment of workplace violence, present findings to their workers, develop and implement the necessary policies and procedures. Failure to do so can result in heavy fines. Call us or visit our website for more details and to see how Leader industries can help with your compliance.

INDUSTRIAL RESOLUTION

With the economy on the rebound the demand for industrial work is on the rise. A safe workplace is a productive workplace and proper training can add to your company's bottom line. Productivity doesn't happen by accident. Proper training and supervision go along way in preventing injuries. Leader's industrial training programs include; WHMIS, fire protection, ladder safety and fall protection, forklift and heavy equipment safety, supervisor training, hot work procedures, scaffold erecting and dismantling, and spill response clean up and contingencies. Now is the perfect time to make sure your workers are up to date with training, licenses and certifications.

Proper training and safe working conditions boost morale, promote productivity and can save companies thousands of dollars in fines and lawsuits.



WORKING WELL TOGETHER

Your company may be required to undertake a WSIB Workwell Audit, which is an evaluation of its health and safety standards and practices. Leveraging our 100% success rate we can help you achieve a passing grade by:

- Developing and facilitating safety training
- Create a safe working environment for your employees
- Help save your company money by minimizing or avoiding costly WSIB premium surcharges.

We have a 100% success rate helping clients pass a Workwell Audit.

Any project, any size, anywhere in the world, Leader Industries is there to minimize risks, make it safe for employees and protect your company's bottom line.

>> Call today for a safer tomorrow: **1-866-939-7999**